



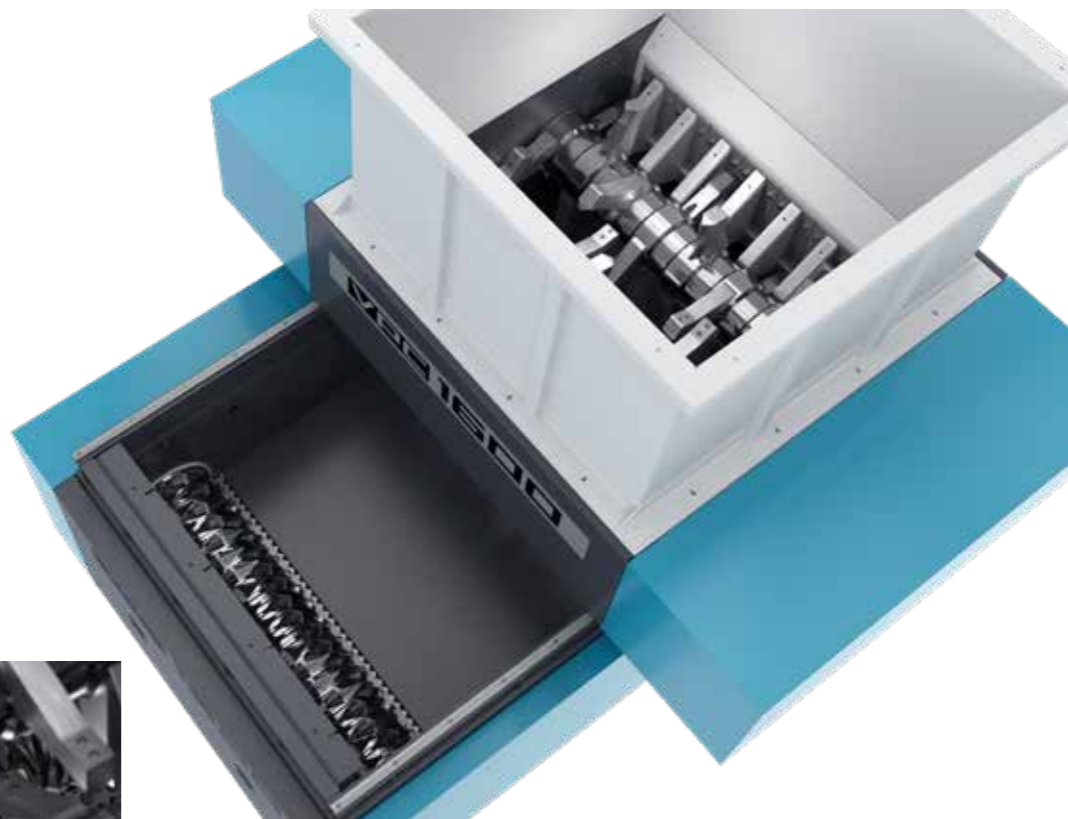
VPC 1600

Primary crusher for large-volume and bulky wood components

Maximum efficiency with up to 50% increase in throughput. The new Vecoplan Pallet Crusher impresses industrial users with its reliable processing of bulky material made of wood.

Vecoplan Pallet Crusher 1600

The Vecoplan VPC twin-shaft crusher is used for primary crushing of bulky wooden components such as pallets, crates & cable drums.



The innovative rotors in the VPC 1600 pre-crush the wood before it is re-shredded by the cutting crowns of the VHZ rotor below.

Fit for many different processes

Output material VPC 1600

- Pre-crushing to increase the performance of the secondary shredder



Input material

- Crates
- Pallets
- Wooden cable drums

Output material VHZ 1600

- Chips for Biomass Fuel
- Briquettable material



Enduring – Exact – Solid

Shredding technology by Vecoplan



Combined solution of VHZ 1600 & VPC 1600

The VPC 1600 can be combined with the VHZ 1600 single shaft shredder. A sliding frame connects the shredder and primary crusher. This combined pre and re-shredding process increases throughput by up to 50 percent.

Example:
Throughput capacity for pallets with 35mm screen in VHZ 1600: 2.7 t/h. Under identical conditions, the combination of VPC 1600 and VHZ 1600 achieves approx. 3.7 t/h.

The VHZ is compact, powerful and universal and can therefore be used for a wide range of residual wood shredding applications.

- Patented ESC drive
- Optimum slide geometry
- Well coordinated drive components
- Solid rotor housing
- Powerful hydraulic unit
- Efficient and innovative control with automatic power regulation



Rotors

- Two independantly operating rotors
- Reversible
- 2 x 16 crusher heads
- 2 x 8 counter crushers



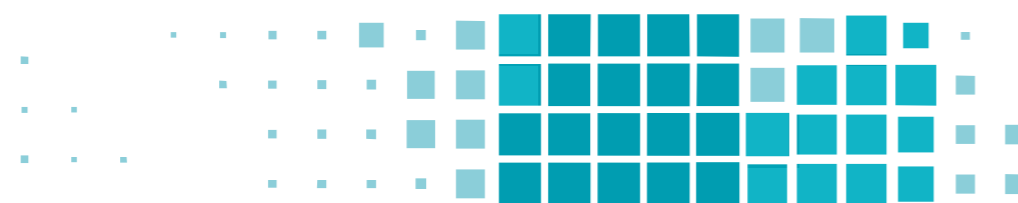
Drives

- Two conventional geared motors with frequency converter
- Drive power is 2 x 9.2 kilowatts



Application

- The VPC can be perfectly combined with a secondary shredder.



VPC 1600 – an investment that pays off

Until now, it was necessary to select a correspondingly large machine for large and bulky components. The combined solution of VPC 1600 and VHZ 1600 achieves a high throughput with a small footprint and lower costs.

Increase of the throughput capacity up to 50%

Low maintenance costs

Simple and fast maintenance work

Small space requirement

Features and performance



Details		VPC 1600
Infeed opening (W x L)	mm	1605 x 1605
Rotor dimensions	mm	d= 750; L= 1595
Rotor speed	rpm	10
Number of counter crushers	pcs.	16
Number of crusher heads	pcs.	32
Motor power (frequency converter)	kW	2 x 9,2 (2 x 15)
Total weight (without hopper and frame)	t	5,5
Dimensions (W x H x L)	mm	3125 x 800 x 1895

Vecoplan®

Vecoplan AG
Vor der Bitz 10
56470 Bad Marienberg | Germany
phone +49 2661 62 67-0
fax +49 2661 62 67-70
welcome@vecoplan.de
www.vecoplan.com